

polyKOM polyKOM-Ex^{Ex}

Casse per morsetti compatibili
in poliestere rinforzato con fibre di vetro

Compatible terminal- enclosures
glass-fibre reinforced

Coffrets compatibles pour bornes
en polyester renforcé de fibres de verre

DATI TECNICI

polyKOM

Cassa

in poliestere rinforzato con fibre di vetro, esente di alogeno. Angolo di sforno: 1°. Le dimensioni interne si riducono in modo circolare verso il fondo della cassa di 1°.

Viti

Viti del coperchio in acciaio inossidabile anticorrosivo e non si perdono.

Classe di protezione
IP 66 / EN 60529

Comportamento al fuoco
VO autoestinguento UL 94.

Isolamento
Isolamento completo a norma di VDE 0100.

Guarnizione

Anello torico in cloroprene resistente all'olio e alla benzina (da -30 °C as +100 °C), su richiesta guarnizione in silicone (da -50 °C a +140 °C).

Fissaggio

Fissaggio del coperchio tramite separate canaline per viti all'infuori del vano di tenuta.

Fissaggio esterno

Fascette di fissaggio esterno in acciaio inossidabile.

Montaggio interno

Bussole M4/M6 incorporate nel fondo della cassa durante lo stampaggio.

Colore

Grigio simile a RAL 7000

Resistenza superficiale

Grigio >10⁹ Ohm
Nero <10⁹ Ohm

Campi d'applicazione:

Ingegneria meccanica
Impiantistica
Tecnica della regolazione all'aperto

TECHNICAL DATA

polyKOM

Enclosure

Polyester, glass-fibre reinforced, halogen-free. 1° mould slope for casting ejection ⇒ Internal measures diminishing circularity towards enclosure bottom by 1°.

Screws

Captive lid screws made of stainless steel, corrosion free and non-loosable.

Ingress protection
IP 66 / EN 60529

Combustion behaviour
VO self-extinguishing UL 94.

Insulation
Fully insulated VDE 0100.

Gasket

Oil and petrol resistant chloroprene gasket (-30 °C up to +100 °C), Silicon-gasket (-50 °C up to +140 °C), on request.

Fastening

Separate screw channels outside the enclosure interior.

External mounting

External mounting brackets, made of stainless steel.

Internal mounting

M4/M6 stainless steel inserts on enclosure bottom.

Colour

Grey similar RAL 7000

Surface resistance

Grey > 10⁹ Ohm
Black < 10⁹ Ohm

Area of application:

Mechanical engineering
Installation engineering
Control engineering outside

DONNEES TECHNIQUES

polyKOM

Coffret

Polyester renforcé de fibres de verre, exempt d'halogènes. 1° biseau au démoulage ⇒ Les dimensions intérieures se réduisent en continu de 1° jusqu'au fond du coffret.

Visseries

Vis du couvercle en acier inox et imperdables.

Protection
IP 66 / EN 60529

Comportement au feu
VO auto-extinguible UL 94.

Isolation
Isolation complète VDE 0100.

Étanchéité

Joint rond en chloroprène résistant aux huiles et essences. (30 °C à +100 °C). Sur demande: joint silicone (-50 °C à +140 °C).

Fixation

Fixation du couvercle et de l'embase en dehors du volume étanche.

Fixation extérieure

Pieds de fixation extérieure en acier inox.

Aménagement intérieur

Inserts intérieures M4/M6 au fond du coffret en acier inox.

Couleur

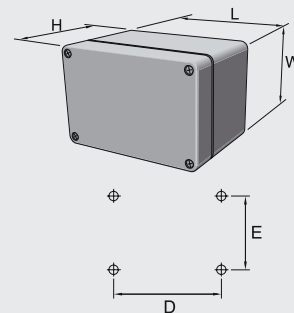
Gris similaire RAL 7000

Résistance superficielle

Gris > 10⁹ Ohm
Noir < 10⁹ Ohm

Sphère d'application:

Construction de machines
Technologie d'installation
Technique de réglage au dehors



Dimensioni di montaggio
Mounting dimensions
Cotes de montage

- 1 Poliestere termoindurente rinforzato con fibre di vetro, resistente agli agenti atmosferici
- 2 Anticorrosivo essendo tutte le parti metalliche fatte in acciaio inossidabile
- 3 Viti di bloccaggio disponibile o con testa positiva /negativa o come vite ad esagono cavo
- 4 Vasto assortimento
- 5 Accessori specifici per le applicazioni
- 6 Classe di protezione IP 66
- 7 7. Isolamento completo

- 1 Weather resistant, duro-plast polyester, fibre glass reinforced
- 2 Corrosion free as all metal parts are made of stainless steel
- 3 Available with plus/minus-fasteners or captive allen screw
- 4 Wide variety of sizes available
- 5 Optimal accessories
- 6 Ingress protection IP 66
- 7 Fully insulated

- 1 Polyester thermodurcissable renforcé de fibre de verre, résistant aux intempéries
- 2 Anti-corrosif, toutes les pièces métalliques sont en acier inox
- 3 Fourniture de vis de fermeture à tête avec fente combinée en croix ou à tête à six pans creux
- 4 Grande variété disponible
- 5 Accessoires optimisés
- 6 Protection IP 66
- 7 Isolation complète







polyKOM

Casse compatibili in poliestere
Compatible polyester enclosures
Coffrets compatibles en polyester



Tavola sinottica della gamma dei prodotti - Range overview - Tableau synoptique des livraisons

-  **S** Cerniere
Hinges
Charnières
-  **IN** Vite ad esagono cavo
Captive allen screw
Vis à six pans creux
-  **D** Guarnizione del coperchio in silicone
Silicon enclosure-gasket
Garniture couvercle en silicone
-  **M** Piastre di montaggio
Mounting plates
Plaques de montage
-  **A** Fascette di fissaggio esterno
External mounting brackets
Pieds de fixation extérieurs
-  **T** Guide portanti per morsettiere di raccordo
Supporting rail for series terminals
Rails supports pour barrettes à bornes

Type	Mat.-Nr	L	W	H	D	E	g						
PK 081	180.081.000	80	75	55	68	45	230	○	○	●	●	○	●
PK 082	180.082.000	110	75	55	98	45	295	○	○	●	●	○	●
PK 083	180.083.000	160	75	55	148	45	405	○	○	●	●	○	●
PK 084	180.081.000	190	75	55	178	45	450	○	○	●	●	○	●
PK 121	180.121.000	122	120	90	106	82	750	●	●	●	●	●	●
PK 123	180.123.000	220	120	90	204	82	1.060	●	●	●	●	●	●
PK 161	180.161.000	160	160	90	140	110	1.130	●	●	●	●	●	●
PK 162	180.162.000	260	160	90	240	110	1.710	●	●	●	●	●	●
PK 163	180.163.000	360	160	90	340	110	2.150	●	●	●	●	●	●
PK 164	180.164.000	560	160	90	540	110	3.185	●	●	●	●	●	●
PK 251	180.251.000	255	250	120	235	200	2.650	●	●	●	●	●	●
PK 252	180.252.000	400	250	120	380	200	3.650	●	●	●	●	●	●
PK 254	180.254.000	600	250	120	580	200	5.235	●	●	●	●	●	●
PK 411	180.411.000	400	405	120	380	355	5.580	●	●	●	●	●	●

□ Standard/Standard/Standard
● Disponibile/available/livrabile ○ Non disponibile/not available/non livrabile

ESEMPIO DI ORDINAZIONE
ORDER EXAMPLE/EXEMPLE DE COMMANDE

Type: PK 161 + A + T etc.

DATI TECNICI

polyKOM-Ex

Casse EEx e/EEx i

Casse in poliestere rinforzato con fibre di vetro, esente da alogeno. Angolo di sforno: 1°. Le dimensioni interne si riducono in modo circolare verso il fondo della cassa di 1°.

Viti

Viti del coperchio in poliammide, anticorrosivo e non si perdono.

Classe di protezione

IP 65 / EN 60529

Comportamento a fuoco

VO autoestinguento UL 94

Guarnizione

Sistema a maschio e femmina con anello torico in cloroprene resistente all'olio e alla benzina.

Temperatura ambiente

da -20°C a +40°C

Fissaggio

Canaline separate per viti all'infuori del vano di tenuta. Fascette di fissaggio esterno in acciaio inossidabile su richiesta.

Montaggio interno

Su richiesta morsetti di raccordo EEx e oppure EEx i omologati disponibili da differenti produttori.

Collegamenti a vite dei cavi

Su richiesta collegamenti a vite dei cavi EEx e oppure EEx i omologati disponibili da differenti produttori.

Omologazione

CE 0344 EX II GD EEx e II T6 T80°C IP65
KEMA 02ATEX2055
KEMA 02ATEX2055 U
EN 50014, EN 50019,
EN 50020, EN 50281-1-1

Connessione a terra (intérieure)

La connessione a terra all'interno tramite guida di massa oppure per via di morsetti in PE.

Accessori

Piastre di montaggio in lamiera zincata, morsetti di raccordo, ecc.

Colore

Nero, simile a RAL 9011

Resistenza superficiale

<10⁹ Ohm

TECHNICAL DATA

polyKOM-Ex

EEx e/EEx i-Enclosure

Polyester, glass-fibre reinforced, halogen-free. 1° mould slope for casting ejection ⇒ Internal measures diminishing circularity towards enclosure bottom by 1°.

Screws

Captive screws made of stainless steel, corrosion free.

Ingress protection

IP 65 / EN 60529

Combustion behaviour

VO self-extinguishing UL 94

Gasket

Tongue and groove system with oil and petrol resistant silicon gasket.

Surrounding temperature

-40°C up to + 40°C

Fastening

Separate screw-channels outside the enclosure interior. External mounting brackets made of stainless steel, on request.

Internal mounting

Approved EEx e or EEx i terminals from several manufacturers.

Cable glands

Approved EEx e or EEx i cable glands from several manufacturers.

Approval

CE 0344 EX II GD EEx e II T6 T80°C IP65
KEMA 02ATEX2055
KEMA 02ATEX2055 U
EN 50014, EN 50019,
EN 50020, EN 50281-1-1

Earth connection (inside)

Earth connection inside through earth-bar or PE-prints.

Accessories

Mounting plates of galvanised sheet steel, terminals, etc.

Colour

Black, similar to RAL 9011

Surface resistance

< 10⁹ Ohm

DONNEES TECHNIQUES

polyKOM-Ex

Coffret EEx e/EEx i

Polyester renforcé de fibres de verre, exempt d'halogènes. 1° biseau au démoulage ⇒ Les dimensions intérieures se réduisent en continu de 1° jusqu'au fond du coffret.

Visseries

Vis de couvercle imperdables en acier inox.

Protection

IP 65 / EN 60529

Combustion

VO - autoextinguible UL 94

Etanchéité

Joint rond en silicone résistant aux huiles et essences.

Température ambiante

-40°C à + 40°C

Fixation

Fixation du couvercle et de l'embase en dehors du volume étanche. Pattes de fixation extérieure en acier inox, sur demande.

Équipement intérieur

Blocs de jonction certifiés EEx e ou EEx i de plusieurs fournisseurs.

Presses étoupe

Presses étoupe certifiée EEx e ou EEx i de plusieurs fournisseurs.

Certifications

CE 0344 EX II GD EEx e II T6 T80°C IP65
KEMA 02ATEX2055
KEMA 02ATEX2055 U
EN 50014, EN 50019,
EN 50020, EN 50281-1-1

Connexion à la terre (intérieure)

Connexion intérieure par des barres de mise à la terre ou terminales PE.

Accessoires

Plaques de montage en acier galvanisé, bornes, etc.,

Couleur

Noir, similaire au RAL 9011

Résistance de surface

< 10⁹ Ohm

- 1 Poliestere termoindurente rinforzato con fibre di vetro, resistente agli agenti atmosferici
- 2 Anticorrosivo essendo tutte le parti metalliche fatte in acciaio inossidabile
- 3 Disponibili sono viti di bloccaggio con testa positiva / negativa oppure come vite con testa a cava esagonale
- 4 Grande assortimento
- 5 Accessori specifici per le applicazioni
- 6 Classe di protezione IP 65

- 1 Weather resistant, duro-plast polyester, fibre glass reinforced
- 2 Corrosion free as all metal parts are made of stainless steel
- 3 Available with plus/minus-fasteners or captive allen screw
- 4 Wide variety of sizes available
- 5 Optional accessories
- 6 Ingress protection IP 65

- 1 Résiste à la corrosion, polyester duro-plast, fibre de verre renforcé
- 2 Toutes les pièces métalliques sont en acier inox
- 3 Différentes vis de fixation couvercle : six pans creux têtes fendues
- 4 Grand choix de tailles de coffret
- 5 Accessoires optimisés
- 6 Protection IP 65

Chiedete dell'
Ex-catalogo
Ex-catalogue on
request
Ex-catalogue
sur demande



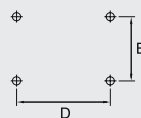
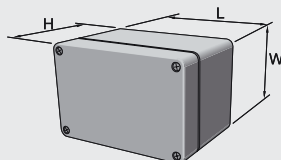


Tavola sinottica della gamma dei - Range overview - Tableau synoptique des livraisons

Type PK	Mat.-Nr *EEx e	Mat.-Nr *EEx i	Mat.-Nr EEx leer	L	W	H	D	E	g							
PK 081	184.081.000	186.081.000	188.081.000	80	75	55	68	45	230	○	○	●	○	●	●	○
PK 082	184.081.000	186.082.000	188.082.000	110	75	55	98	45	295	○	○	●	○	●	●	○
PK 083	184.083.000	186.083.000	188.083.000	160	75	55	148	45	405	○	○	●	○	●	●	○
PK 084	184.084.000	186.084.000	188.084.000	190	75	55	178	45	450	○	○	●	○	●	●	○
PK 121	184.121.000	186.121.000	188.121.000	122	120	90	106	82	750	●	●	●	●	●	●	●
PK 123	184.123.000	186.123.000	188.123.000	220	120	90	204	82	1.060	●	●	●	●	●	●	●
PK 161	184.161.000	186.161.000	188.161.000	160	160	90	140	110	1.130	●	●	●	●	●	○	●
PK 162	184.162.000	186.162.000	188.162.000	260	160	90	240	110	1.710	●	●	●	●	●	○	●
PK 163	184.163.000	186.163.000	188.163.000	360	160	90	340	110	2.150	●	●	●	●	●	○	●
PK 164	184.164.000	186.164.000	188.164.000	560	160	90	540	110	3.185	●	●	●	●	●	○	●
PK 251	184.251.000	186.251.000	188.251.000	255	250	120	235	200	2.650	●	●	●	●	●	○	●
PK 252	184.252.000	186.252.000	188.252.000	400	250	120	380	200	3.650	●	●	●	●	●	○	●
PK 254	184.254.000	186.254.000	188.254.000	600	250	120	580	200	5.235	●	●	●	●	●	○	●
PK 411	184.411.000	186.411.000	188.411.000	400	405	120	380	355	5.580	●	●	●	●	●	○	●

* Fornitura con T e 2 morsetti - Delivery with T and 2 terminals - Livraison avec T et 2 pinces

- S** Cerniere
Hinges
Charnières
- IN** Vite con testa a cava esagonale
Captive allen screw
Vis à six pans creux
- M** Piastre di montaggio
Mounting plates
Plaques de montage
- A** Fascette di fissaggio esterno
External mounting brackets
Pieds de fixation extérieurs
- T** Guide portanti per morsettiere di raccordo
Supporting rail for series terminals
Rails supports pour barrettes à bornes
- SL** Conduttore di protezione
Earth
Terre
- ES** Guida di massa
Earthbar
Mises à la terre



Dimensioni di montaggio
Mounting dimensions
Cotes de montage

□ Standard/Standard/Standard

● Disponibile/available/livrabile

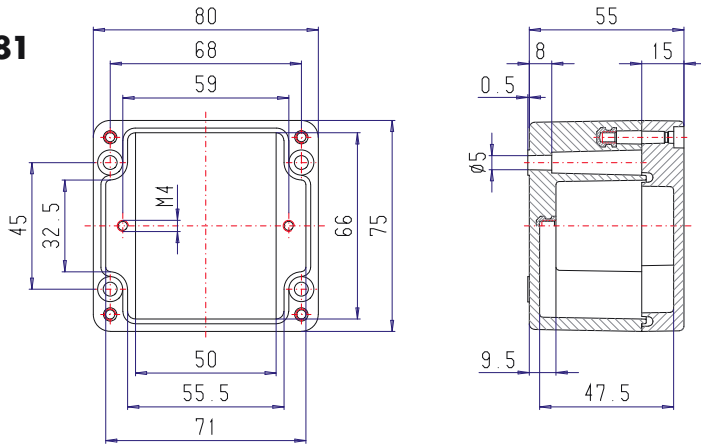
○ Non disponibile/not available/non livrabile

ESEMPIO DI ORDINAZIONE
ORDER EXAMPLE/EXEMPLE DE COMMANDE

Type: PK 161 EEx i + IN + A etc.

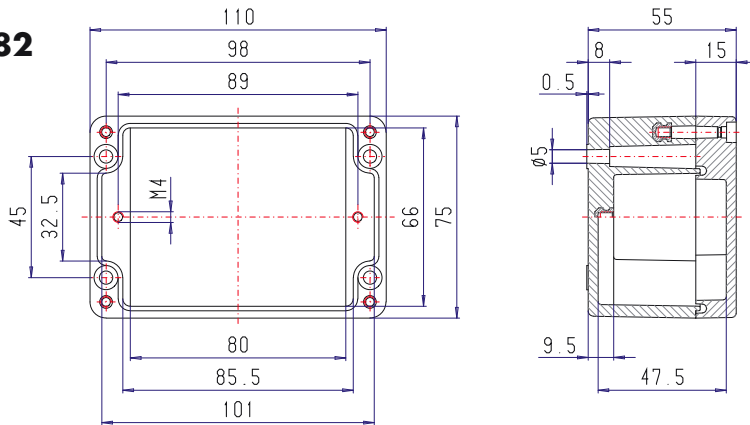


PK 081



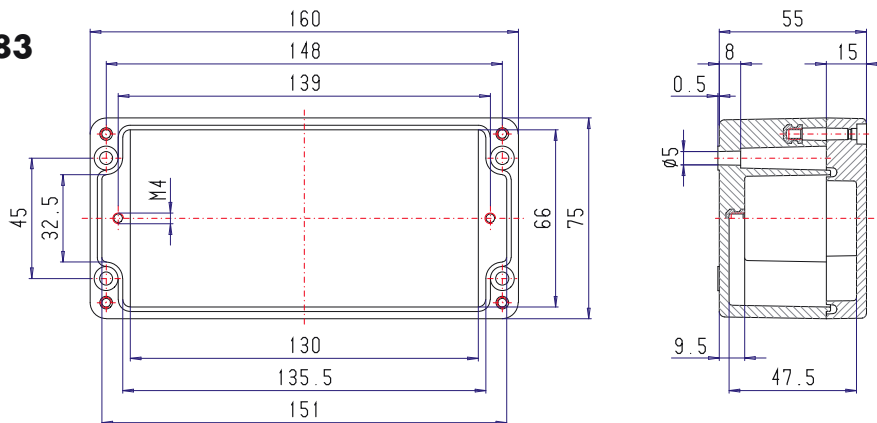
M Collegamento a vite dei cavi a Cable glands x Press étoupe			
A C B D		A/B	C/D
M 16	PG 7	5	2
	PG 9	3	1
	PG 11	2	1
M 20	PG 13,5	2	1
	PG 16	2	1
M 25	PG 21	1	
M 32	PG 29		
M 40	PG 36		
M 50	PG 42		
M 63	PG 48		

PK 082



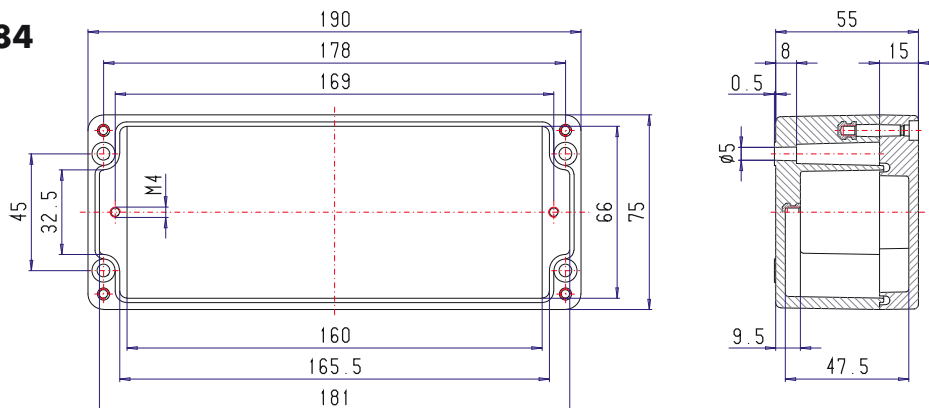
M Collegamento a vite dei cavi a Cable glands x Press étoupe			
A C B D		A/B	C/D
M 16	PG 7	8	8
	PG 9	5	1
	PG 11	3	1
M 20	PG 13,5	3	1
	PG 16	3	1
M 25	PG 21	2	
M 32	PG 29	2	
M 40	PG 36		
M 50	PG 42		
M 63	PG 48		

PK 083



M Collegamento a vite dei cavi a Cable glands x Press étoupe			
A C B D		A/B	C/D
M 16	PG 7	13	2
	PG 9	8	1
	PG 11	6	1
M 20	PG 13,5	5	1
	PG 16	4	1
M 25	PG 21	3	
M 32	PG 29		
M 40	PG 36		
M 50	PG 42		
M 63	PG 48		

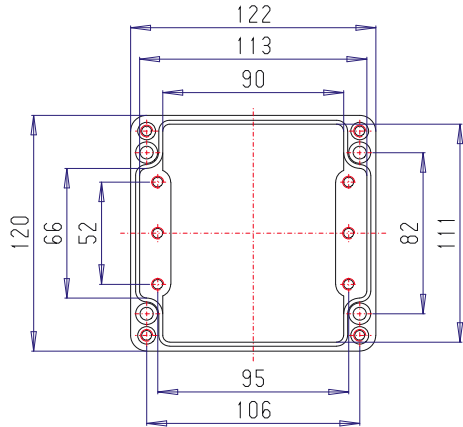
PK 084



M Collegamento a vite dei cavi a Cable glands x Press étoupe			
A C B D		A/B	C/D
M 16	PG 7	16	2
	PG 9	10	1
	PG 11	7	1
M 20	PG 13,5	6	1
	PG 16	5	1
M 25	PG 21	4	
M 32	PG 29		
M 40	PG 36		
M 50	PG 42		
M 63	PG 48		



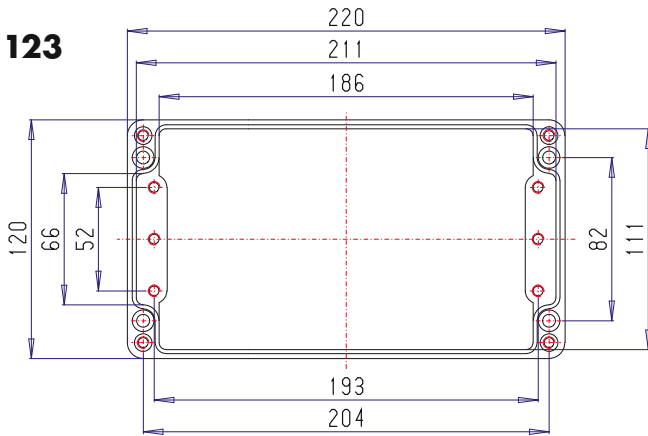
PK 121



M Collegamento a vite dei cavi
a Cable glands
x Press étoupe

A		A/B/C/D	
C	D	A	B/C/D
	B	PG 7	12 8
M 16		PG 9	8 6
		PG 11	8 4
M 20		PG 13,5	6 4
		PG 16	6 3
M 25		PG 21	2 2
M 32		PG 29	2 1
M 40		PG 36	1
M 50		PG 42	
M 63		PG 48	

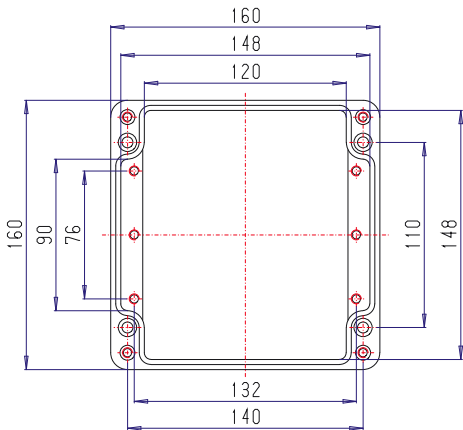
PK 123



M Collegamento a vite dei cavi
a Cable glands
x Press étoupe

A		A/B/C/D	
C	D	A	B/C/D
	B	PG 7	27 8
M 16		PG 9	20 6
		PG 11	16 4
M 20		PG 13,5	14 4
		PG 16	12 3
M 25		PG 21	5 2
M 32		PG 29	3 1
M 40		PG 36	3 1
M 50		PG 42	
M 63		PG 48	

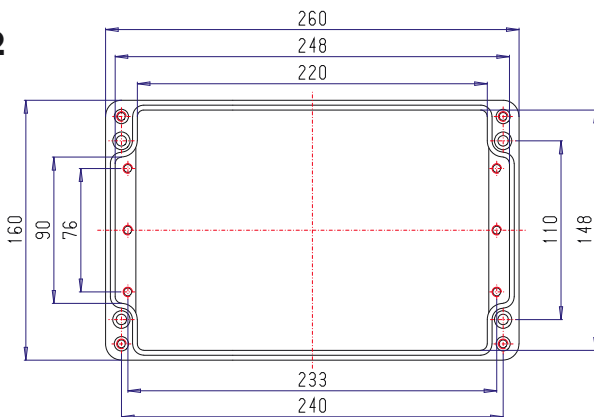
PK 161



M Collegamento a vite dei cavi
a Cable glands
x Press étoupe

A		A/B/C/D	
C	D	A	B/C/D
	B	PG 7	18 12
M 16		PG 9	15 8
		PG 11	10 8
M 20		PG 13,5	10 6
		PG 16	8 6
M 25		PG 21	4 2
M 32		PG 29	2 2
M 40		PG 36	2 1
M 50		PG 42	1
M 63		PG 48	

PK 162

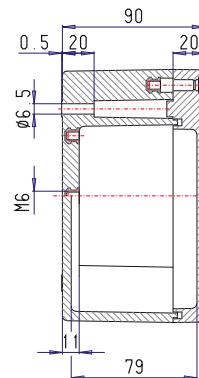


M Collegamento a vite dei cavi
a Cable glands
x Press étoupe

A		A/B/C/D	
C	D	A	B/C/D
	B	PG 7	36 12
M 16		PG 9	30 8
		PG 11	18 8
M 20		PG 13,5	18 6
		PG 16	14 6
M 25		PG 21	7 2
M 32		PG 29	4 1
M 40		PG 36	3 1
M 50		PG 42	3
M 63		PG 48	



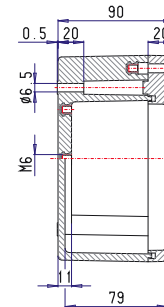
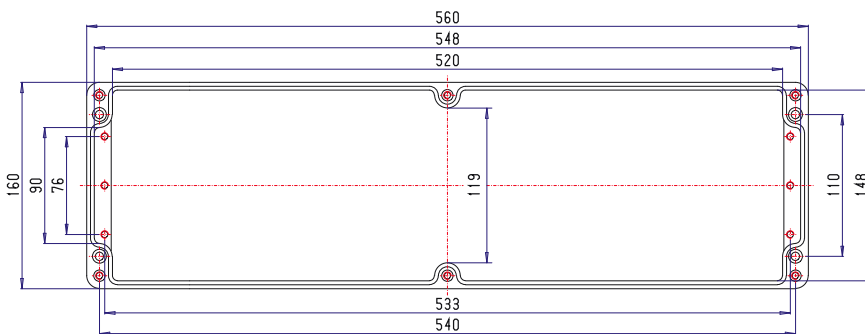
PK 163



M Collegamento a vite dei cavi
a Cable glands
x Press étoupe

A		A/B	C/D
C	D		
B	PG 7	51	12
M 16	PG 9	42	8
	PG 11	28	8
M 20	PG 13,5	26	6
	PG 16	20	6
M 25	PG 21	11	2
M 32	PG 29	6	2
M 40	PG 36	5	1
M 50	PG 42	4	
M 63	PG 48		

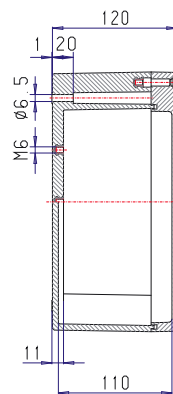
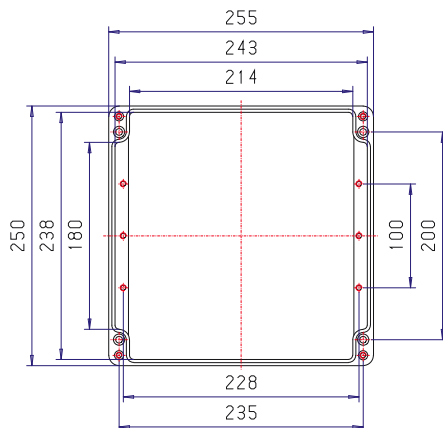
PK 164



M Collegamento a vite dei cavi
a Cable glands
x Press étoupe

A		A/B	C/D
C	D		
B	PG 7	89	12
M 16	PG 9	66	8
	PG 11	44	8
M 20	PG 13,5	40	6
	PG 16	32	6
M 25	PG 21	16	2
M 32	PG 29	10	2
M 40	PG 36	8	1
M 50	PG 42	6	
M 63	PG 48		

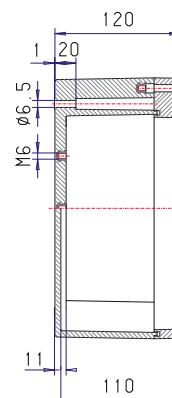
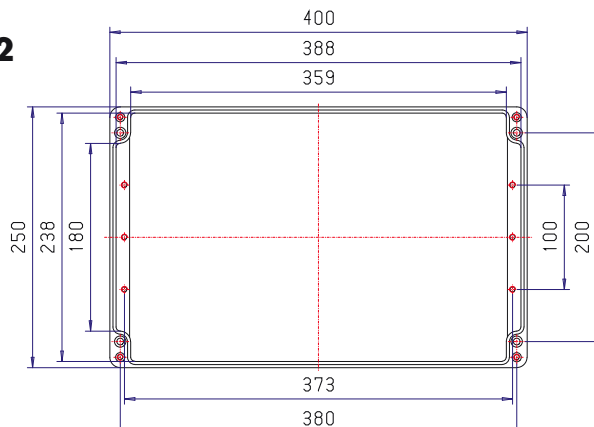
PK 251



M Collegamento a vite dei cavi
a Cable glands
x Press étoupe

A		A/B	C/D
C	D		
B	PG 7	48	40
M 16	PG 9	40	27
	PG 11	27	21
M 20	PG 13,5	24	21
	PG 16	14	12
M 25	PG 21	10	8
M 32	PG 29	7	5
M 40	PG 36	4	3
M 50	PG 42	3	2
M 63	PG 48	3	2

PK 252

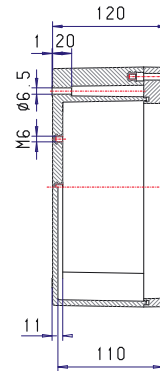
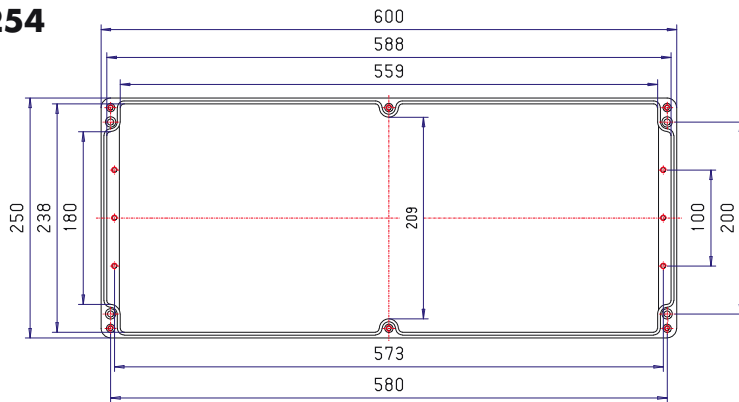


M Collegamento a vite dei cavi
a Cable glands
x Press étoupe

A		A/B	C/D
C	D		
B	PG 7	84	36
M 16	PG 9	64	27
	PG 11	48	21
M 20	PG 13,5	42	18
	PG 16	26	12
M 25	PG 21	18	8
M 32	PG 29	12	5
M 40	PG 36	6	3
M 50	PG 42	5	2
M 63	PG 48	5	2



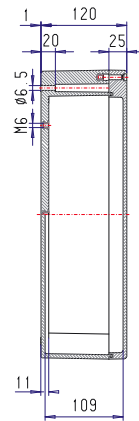
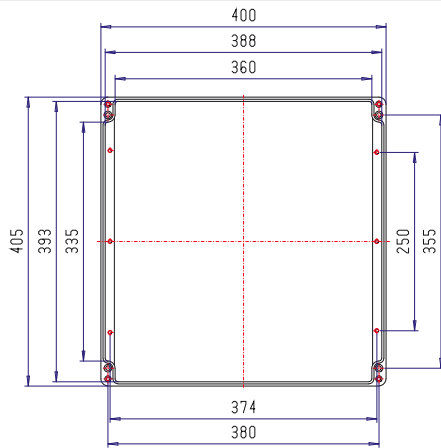
PK 254



M Collegamento a vite dei cavi
a Cable glands
x Press étoupe

C	A		A/B C/D	
	B	D		
		PG 7	120	36
M 16		PG 9	96	27
		PG 11	72	21
M 20		PG 13,5	66	18
		PG 16	36	12
M 25		PG 21	28	8
M 32		PG 29	18	5
M 40		PG 36	10	3
M 50		PG 42	8	2
M 63		PG 48	6	2

PK 411



M Collegamento a vite dei cavi
a Cable glands
x Press étoupe

C	A		A/B C/D	
	B	D		
		PG 7	84	72
M 16		PG 9	64	51
		PG 11	48	42
M 20		PG 13,5	42	36
		PG 16	26	24
M 25		PG 21	18	16
M 32		PG 29	12	9
M 40		PG 36	6	6
M 50		PG 42	5	5
M 63		PG 48	5	4

